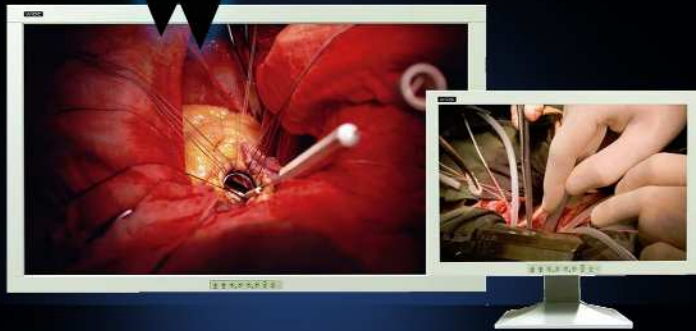


DBI 24" & 42" Surgical LCDs

DOUBLE
BLACK
IMAGING



DBI 24HDS & DBI 42HDS

The 24" DBI-24HDS and 42" DBI-42HDS surgical LCDs provide superior solutions that fit all stringent surgical imaging requirements. With full HD resolution, ultra high brightness and contrast, they are the monitors of choice for the OR and ER. They deliver bold, vibrant, images even when viewed from a distance. The DBI-24HDS and DBI-42HDS support a variety of video inputs for existing and new camera technologies and eliminate costly signal conversion, image degradation and image lag. These surgical displays feature exceptionally fast response time necessary when viewing live video or motion.

These units are compatible with standard booms, wall, or cart mounts and have the ability to be sanitized within the OR environment.

- ◆ IP43 Rated - Splashproof
- ◆ Variety of Inputs - Compatible with HD-SDI and Legacy Systems
- ◆ Bonded Protective Panels with Sealed controls
- ◆ Can be sanitized within the OR Environment
- ◆ Picture in Picture and Picture by Picture Compatible
- ◆ Full HD Resolution
- ◆ Ultra High Brightness and Contrast
- ◆ Standard Wall, Boom and Cart mounting options available
- ◆ Full 3 Year Warranty



PACS Displays



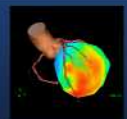
Clinical Displays



Surgical Displays



DICOMatrix



3D Imaging

DBI 24HDS / DBI42HDS

Description	24" Surgical LCD	42" Surgical LCD
Recommended Modalities	Surgical, IP43 Rated	
Diagonal Screen Size	24", 16:9 Aspect Ratio	42", 16:9 Aspect Ratio
# of Pixels	2.3 Mega-Pixel	2 Mega-Pixel
Resolution	1920 x 1200 Landscape	1920 x 1080 Landscape
Brightness	400 cd/m ²	500 cd/m ²
Contrast Ratio	1300:1	
Viewing Angle	178° Horizontal & Vertical	
Input Connectivity	Composite - RCA (x1), NTSC, PAL Component RGB - BNC (x3) DVI (x1) Sync on green - BNC (x1) Serial Remote - RS232, 9-pin DIN S-Video - 4pin DIN(x1) RGB H/V sync - BNC (x5) PC RGB - 15-pin D-Sub(x1) (HD-) SDI - BNC (x1), HD USB - 1 Upstream/ 2 Downstream	
Scanning Frequency	Horizontal Scan - 30-90KHz (15.75KHz for CVBS) Vertical Scan - 50-85Hz (WUXGA, UXAG @ 60Hz) Maximum Bandwidth - 195MHz	
Diagnostic Viewing Modes	Bluebase, Clearbase, sRGB, Text, Grayscale, User	
Dimensions HxWxD (Inches)	18.4 x 22.8 x 15.1"	23.8 x 39.7 x 4.3"
Weight with Stand/Base (lbs)	22 lbs	59 lbs
Power Supply	Internal	
Power Consumption	120 Max	240 Max
Compliance/Safety Standards	UL60601-1, IE60601-1, CE, CCC, FCC Class B, EN60601-1-2, CE, EN 55022 Class B, EN6100-3-2, MIC, VCCI	
Service & Support	24/7	
Warranty	3 years on the LCD,	
Other Options	Extended warranty options available, Mounting, Cart and other OR accessories available.	

Double Black Imaging

11005 Dover St, Suite 500
 Westminster, CO 80021
 Tel. 877-852-2870, 303-404-2222
 Fax 303-460-0276
 sales@doubleblackimaging.com
 www.doubleblackimaging.com

DOUBLE
 BLACK
 IMAGING

DOUBLE
 BLACK
 IMAGING