

# The DBI 3MP Color LCD

DOUBLE  
BLACK  
IMAGING

## DBI2103CP-PP



The DBI2103CP-PP is a 3 mega-pixel high bright color LCD offering retractable front sensors for True DICOM gray level and luminance auto-calibration. The unobtrusive sensor emerges from the bezel to calibrate and retracts when calibration is complete.

X-CAL® Client and Remote Administration DICOM Auto-Calibration Software are included with each system at no charge. X-CAL® Client, the local workstation software will allow even individual workstations to be configured for auto-calibration without a network software piece. X-CAL® Remote Administration Server Software and the P-Series will allow an administrator to monitor all the displays within the enterprise, launch calibration and receive alerts if LCDs fall out of calibration or if calibration was unable to be completed.

The durable, bonded protective panel includes an anti-reflective coating and comes standard with the DBI2103CP-PP. The added durability reduces maintenance costs and extends the useful life of the LCD.

- ◆ 20.8" 3MP (1536 x 2048, 2048 x 1536) Color TFT LCD
- ◆ Brightness - 600 cd/m<sup>2</sup>
- ◆ Contrast Ratio - 600:1
- ◆ Complete Screen Luminance Uniformity Control
- ◆ Built in Retractable Front Sensors with Backlight Sensor
- ◆ 12 Bit Processing for Precise Image Rendering
- ◆ Digital Ambient Light Compensation
- ◆ Bonded Protective Panel
- ◆ Full 5 Year Warranty



PACS Displays



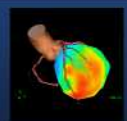
Clinical Displays



Surgical Displays



DICOMetrix



3D Imaging

# DBI 2103CP-PP

<b>Description</b>	3 Mega-Pixel Color LCD with retractable front sensors, backlight sensor and bonded protective panel
<b>Recommended Modalities</b>	CR, CT, DR, MR, Ultrasound, NucMed, PET, 3D, PACS
<b>Diagonal Screen Size</b>	20.8"
<b># of Pixels</b>	3.1 Mega-Pixel
<b>Resolution</b>	1536 x 2048 Portrait; 2048 x 1536 Landscape
<b>Brightness</b>	600 cd/m <sup>2</sup>
<b>Contrast Ratio</b>	600:1
<b>Viewing Angle</b>	170° Horizontal & Vertical
<b>Palette</b>	16.7 Million Colors
<b>Video Inputs</b>	DVI
<b>Dimensions HxWxD (Inches)</b>	21.5 x 14.8 x 7.8"
<b>Weight with Stand/Base (lbs)</b>	30.8 lbs
<b>Power Supply</b>	External for added reliability
<b>Power Consumption</b>	115W/5W During power save
<b>Compliance/Safety Standards</b>	UL60601-1, cUL2601-1, CE, IEC/EN60601-1, FCC Class B, VCCI, MIC, CCC, FDA 510(k)
<b>Service &amp; Support</b>	24/7
<b>Warranty</b>	5 years on the LCD, Electronics and Backlight; 3 years on the graphic controller
<b>Other Features</b>	Retractable Front Sensor for True Auto-Calibration, Client/Remote Administration Calibration Software included, Bonded Protective Panel, Rear Sensor for Back light brightness control, Digital Ambient Light Compensation, Complete Screen Luminance Uniformity Control, 12 Bit Processing for Precise Image Rendering, VESA Standard Mounting configuration, Other Mounting options available



DOUBLE  
BLACK  
IMAGING

**Double Black Imaging**  
11005 Dover St, Suite 500  
Westminster, CO 80021  
Tel. 877-852-2870, 303-404-2222  
Fax 303-460-0276  
sales@doubleblackimaging.com  
www.doubleblackimaging.com



DOUBLE  
BLACK  
IMAGING