

**DOUBLE  
BLACK  
IMAGING**

# The DBI 1MP Color LCD

## DBI1911CP

The DBI1911CP is a 1.3 mega-pixel, 19" color LCD. It provides five pre-calibrated 10-bit DICOM LUT modes. The DBI1911CP delivers luminance of 300cd/m<sup>2</sup> a contrast ratio of 700:1 for exceptional image quality in a variety of user environments.

High Advanced Video Image Processing features motion adaptive deinterlacing, dynamic edge enhancement, spatial noise reduction, and low-angle/jaggy-free images during 'Real-time' procedures.

The DBI1911CP replaces most existing review or modality CRT monitors and accepts analog, DVI, S-Video, composite, and BNC (SOG)



◆ 19" 1MP (1280 x 1024, 1024 x 1280) Color TFT LCD

◆ Brightness - 300 cd/m<sup>2</sup>

◆ Contrast Ratio - 700:1

◆ Wide Viewing Angle - 170° Horizontal & Vertical

◆ Five Preset DICOM Modes

◆ Perfect for CT, MR, US, NM & Clinical Applications

◆ Multiple Inputs ease replacement on older systems

◆ Advanced Imaging Processing for Superior Image Quality

◆ Full 5 Year Warranty



PACS Displays



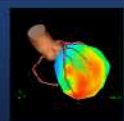
Clinical Displays



Surgical Displays



DICOMetrix



3D Imaging

# DBI 1911CP

<b>Description</b>	1 Mega-Pixel Color LCD with Backlight Sensor
<b>Recommended Modalities</b>	CT, MR, US, NucMed, PET, PACS Review and other Clinical Applications
<b>Diagonal Screen Size</b>	19.0"
<b># of Pixels</b>	1.3 Mega-Pixel
<b>Resolution</b>	1024 x 1280 Portrait; 1280 x 1024 Landscape
<b>Brightness</b>	300 cd/m <sup>2</sup>
<b>Contrast Ratio</b>	700:1
<b>Viewing Angle</b>	170° Horizontal & Vertical
<b>Palette</b>	16.7 Million
<b>Video Inputs</b>	DVI, D-Sub, BNC (SOG), S-Video, CVBS
<b>Dimensions HxWxD (Inches)</b>	19.4 x 14.2 x 7.87"
<b>Weight with Stand/Base (lbs)</b>	30.8 lbs
<b>Power Supply</b>	External for added reliability
<b>Power Consumption</b>	65W/5W During power save
<b>Compliance/Safety Standards</b>	UL60601-1,CE,IEC/EN60601-1,FCC Class B, VCCI, MIC, CCC
<b>Service &amp; Support</b>	24/7
<b>Warranty</b>	5 years on the LCD, Electronics and Backlight; 3 years on the graphic controller
<b>Other Features</b>	Rear Sensor for Back light brightness control, Optional PCI-e Graphic Controller, VESA Standard mounting configuration, Optional Manual Calibration tool and software, Other mounting options available.



DOUBLE  
BLACK  
IMAGING

Double Black Imaging  
11005 Dover St, Suite 500  
Westminster, CO 80021  
Tel. 877-852-2870, 303-404-2222  
Fax 303-460-0276  
sales@doubleblackimaging.com  
www.doubleblackimaging.com



DOUBLE  
BLACK  
IMAGING